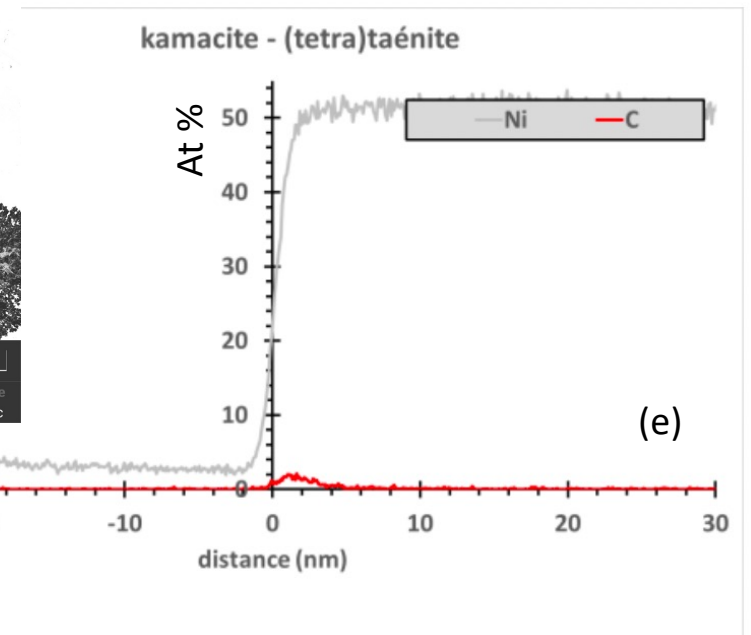
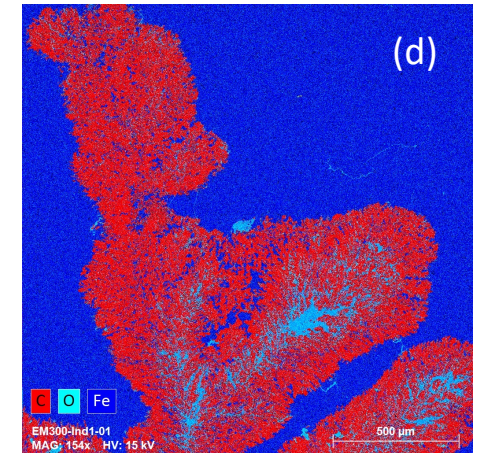
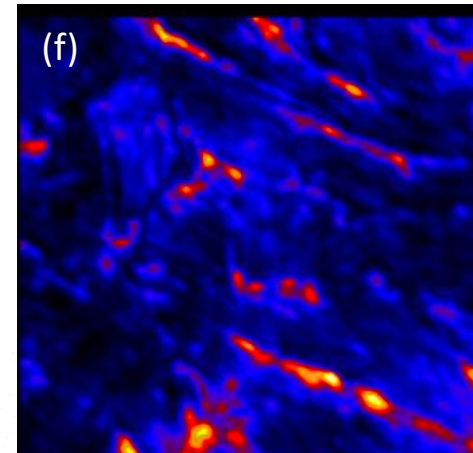
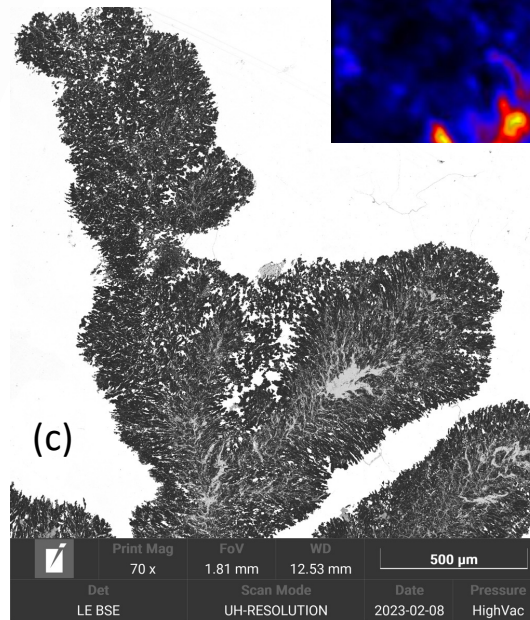
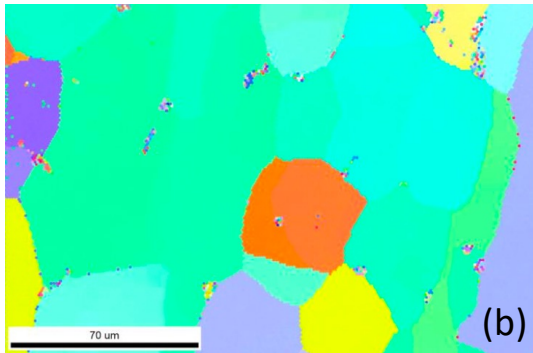


Météorite El Medano 300

Observations préliminaires



(a) Tranche (L = 10 cm) (b) Observation EBSD de la kamacite (IPF Y) © et (d) Image et cartographie chimique des fleurs de graphite (MEB) (e) Profil de diffusion observé par SAT (f) Image nanoSIMS des variations du rapport $^{13}\text{C}/^{12}\text{C}$ (l=50 μm) dans les fleurs de graphite